

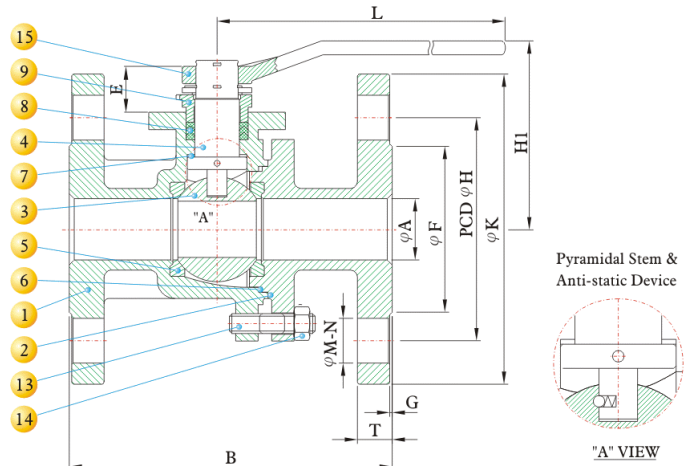
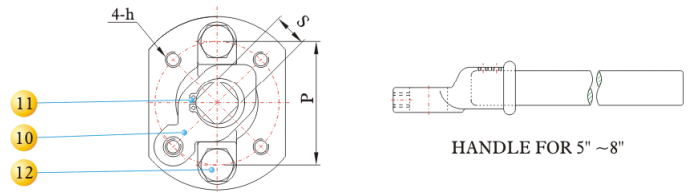


DESIGN FEATURES:

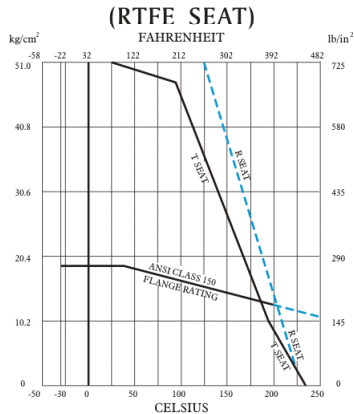
- Steam rating: 150 psi WSP
- ISO 5211 Actuator Mounting Pad
- Blow-out-proof stem design
- Anti - Static Device
- Body: ASTM A351 Gr.CF8M
- Ball: SS316
- Stem: SS316
- Seat: Reinforced Teflon
- Temperature Range: -50° to 450° F
- Face to Face: ANSI B16.10
- Flange Dimensions: ANSI B16.5 150 lbs

MATERIALS LIST

NO.	PART NAME	MATERIAL	QTY
1	BODY	ASTM A351 Gr.CF8M	1
2	CAP	ASTM A351 Gr.CF8M	1
3	BALL	ASTM A351 Gr.CF8M	1
4	STEM	ASTM A276 Gr.316	1
5	SEAT	PTFE+15%G/F	2
6	GASKET	PTFE	1
7	THRUST WASHER	PTFE	1
8	PACKING	PTFE	1
9	GLAND	ASTM A351 Gr.CF8	1
10	STOPPER	SS304	1
11	SNAP RING	SS304	2
12	GLAND BOLT	ASTM A193 Gr.B8	2
13	STUD BOLT	ASTM A193 Gr.B8	4~12
14	SET NUT	ASTM A194 Gr.8M	4~12
15	HANDLE	ASTM A536 Gr.B 65-45-12	1



PRESSURE TEMPERATURE RATINGS



DIMENSIONS

SIZE	A		B		E	F		G		H		K		T		M		N	P		S		L		H1		h	Cv Factor	Weight			
	inch	mm	inch	mm		inch	mm	inch	mm	inch	mm	inch	mm	inch	mm	inch	mm		inch	mm	inch	mm	inch	mm	inch	mm			inch	mm	Kg	Lb
1/2"	15	0.59	15.0	4.25	107.9	0.98	25.0	1.38	35.0	0.06	1.6	2.38	60.4	3.50	88.9	0.44	11.1	0.62	15.7	4	1.65	42	0.43	11	5.18	131.5	2.91	73.8	M5*P0.8	26	2.00	4.41
3/4"	20	0.79	20.0	4.62	117.3	1.02	26.0	1.69	42.9	0.06	1.6	2.75	69.8	3.88	98.5	0.44	11.1	0.62	15.7	4	1.65	42	0.43	11	5.18	131.5	2.94	74.8	M5*P0.8	55	2.50	5.51
1"	25	0.98	25.0	5.00	127.0	1.24	31.5	2.00	50.8	0.06	1.6	3.12	79.2	4.25	107.9	0.44	11.1	0.62	15.7	4	1.97	50	0.55	14	6.42	163.0	3.44	87.4	M6*P1.0	110	3.00	6.62
1 1/4"	32	1.26	32.0	5.50	139.7	1.24	31.5	2.50	63.5	0.06	1.6	3.50	88.9	4.62	117.3	0.50	12.7	0.62	15.7	4	1.97	50	0.55	14	6.42	163.0	3.63	92.2	M6*P1.0	180	4.50	9.92
1 1/2"	40	1.50	38.0	6.50	165.1	1.65	42.0	2.88	73.1	0.06	1.6	3.88	98.5	5.00	127.0	0.56	14.2	0.62	15.7	4	2.76	70	0.67	17	9.13	232.0	4.76	121.0	M8*P1.25	270	6.00	13.23
2"	50	1.97	50.0	7.00	177.8	1.65	42.0	3.62	91.9	0.06	1.6	4.75	120.6	6.00	152.4	0.62	15.7	0.75	19.0	4	2.76	70	0.67	17	9.13	232.0	5.08	129.0	M8*P1.25	500	8.50	18.74
2 1/2"	65	2.56	65.0	7.50	190.5	1.65	42.0	4.12	104.6	0.06	1.6	5.50	139.7	7.00	177.8	0.69	17.5	0.75	19.0	4	2.76	70	0.67	17	9.13	232.0	5.55	141.0	M8*P1.25	800	13.00	28.67
3"	80	3.15	80.0	8.00	203.2	2.20	56.0	5.00	127.0	0.06	1.6	6.00	152.4	7.50	190.5	0.75	19.0	0.75	19.0	4	4.02	102	0.87	22	12.87	327.0	6.52	165.7	M10*P1.5	1150	18.00	39.69
4"	100	3.94	100.0	9.00	228.6	2.20	56.0	6.19	157.2	0.06	1.6	7.50	190.5	9.00	228.6	0.94	23.8	0.75	19.0	8	4.02	102	0.87	22	12.87	327.0	7.11	180.7	M10*P1.5	2120	28.00	61.74
6"	150	5.91	150.0	15.50	393.7	2.64	67.0	8.50	215.9	0.06	1.6	9.50	241.3	11.00	279.4	1.00	25.4	0.88	22.3	8	4.92	125	1.06	27	42.20	1072.0	9.95	252.8	M12*P1.75	5100	75.00	165.38
8"	200	7.87	200.0	18.00	457.2	2.62	66.5	10.62	269.7	0.06	1.6	11.75	298.4	13.50	342.9	1.12	28.4	0.88	22.3	8	5.51	140	1.30	33	42.52	1080.0	11.73	297.9	M16*P2.0	9400	130.00	286.65