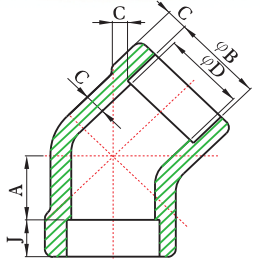
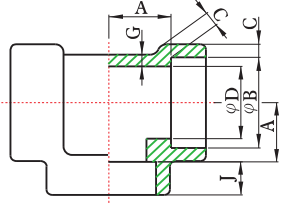
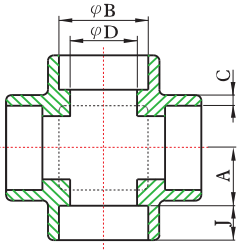
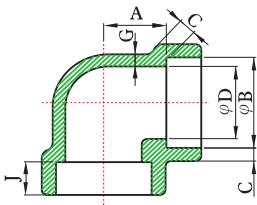




Codo 90° / Cruces / Tees / Codo 45°



90° ELBOW

CROSS

TEE

45° ELBOW

DIMENSIONES

unit : inch

DN	Nom. Pipe Size	Socket Bore Dia. (2) B	Bore Diameter of Fitting (2) D		Socket Wall Thickness (1) C				Body Wall Thickness G		Depth of Socket Min. J
					Class Designation				Class Designation		
			Class Designation		3000		6000		3000	6000	
			3000	6000	Ave.	Min.	Ave.	Min.	Min.	Min.	
6	1/8	0.441	0.299	0.189	0.125	0.125	0.156	0.135	0.095	0.124	0.374
		0.425	0.240	0.126							
8	1/4	0.575	0.394	0.280	0.149	0.130	0.181	0.158	0.119	0.145	0.374
		0.559	0.335	0.220							
10	3/8	0.709	0.524	0.390	0.158	0.138	0.198	0.172	0.126	0.158	0.374
		0.693	0.465	0.331							
15	1/2	0.874	0.654	0.492	0.184	0.161	0.235	0.204	0.147	0.188	0.374
		0.858	0.591	0.433							
20	3/4	1.087	0.854	0.642	0.193	0.168	0.274	0.238	0.154	0.219	0.492
		1.071	0.795	0.583							
25	1	1.350	1.079	0.846	0.224	0.196	0.312	0.273	0.179	0.250	0.492
		1.335	1.020	0.783							
32	1-1/4	1.697	1.409	1.189	0.239	0.208	0.312	0.273	0.191	0.250	0.492
		1.681	1.350	1.130							
40	1-1/2	1.937	1.638	1.366	0.250	0.218	0.351	0.307	0.200	0.281	0.492
		1.921	1.579	1.307							
50	2	2.429	2.098	1.717	0.273	0.238	0.430	0.374	0.218	0.344	0.630
		2.409	2.035	1.657							
65	2-1/2	2.929	2.528		0.345	0.302			0.276		0.630
		2.909	2.409								
80	3	3.555	3.126		0.375	0.327			0.300		0.630
		3.535	3.008								
100	4	4.555	4.087		0.421	0.368			0.337		0.748
		4.535	3.965								